

Qui ose rentrer dans les « Bat caves » ? Interface entre chauves-souris, animaux et humains dans deux grottes en République du Congo

Morgane LABADIE^{1,2}, Serge MORAND³, Alexandre CARON^{1,2}, Mathieu BOURGAREL^{1,2,6} and Hélène DE NYS^{1,2,6}



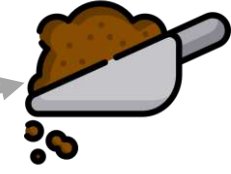
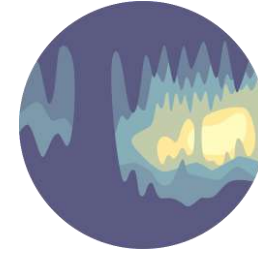
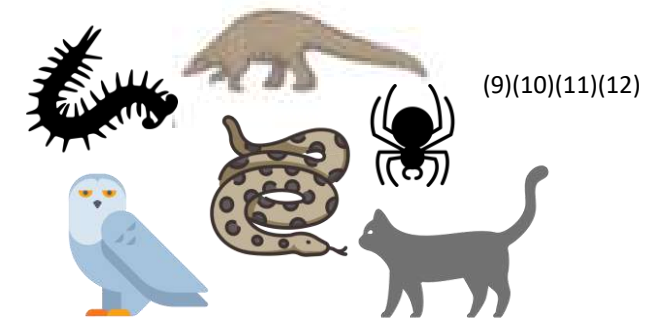
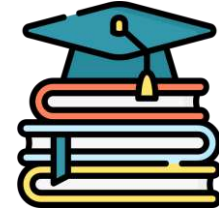
eboSURSY

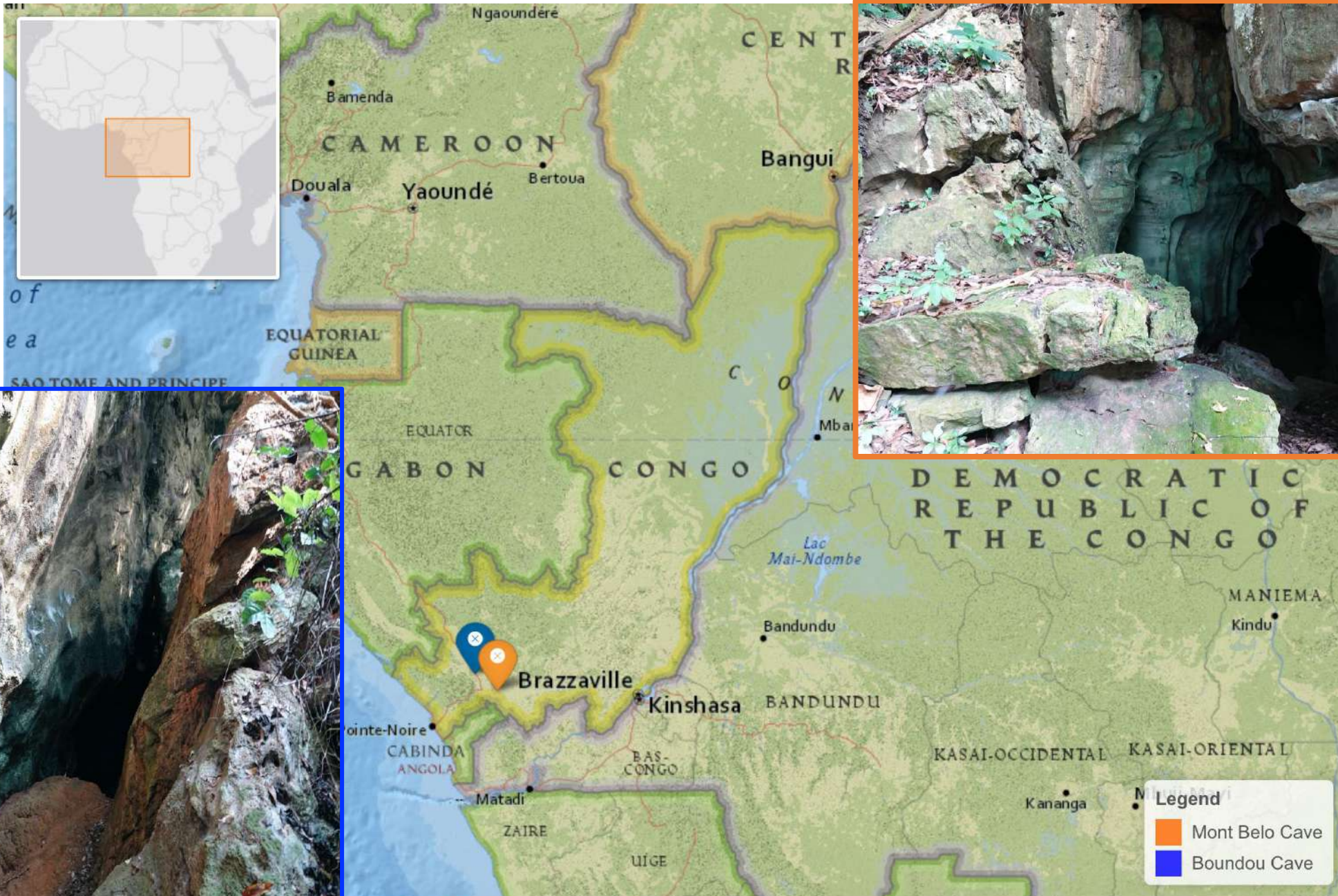
REPUBLIQUE DU CONGO
Unité - Travail - Progrès



MINISTERE DE L'AGRICULTURE,
DE L'ELEVAGE ET DE LA PECHE

**DIRECTION GENERALE
DE L'ELEVAGE**







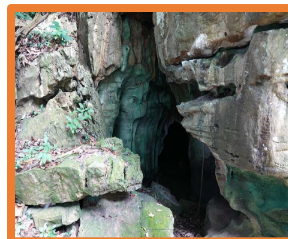
- 1) Identifier les taxons et les espèces les plus présentes à l'intérieur et à l'extérieur des grottes abritant des chauves-souris
- 2) Identifier les interactions et comportements entre les hommes – faune sauvage – les chauves-souris cavernicoles



Mont Belo : 4



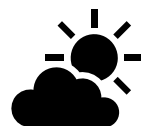
Boundou: 5



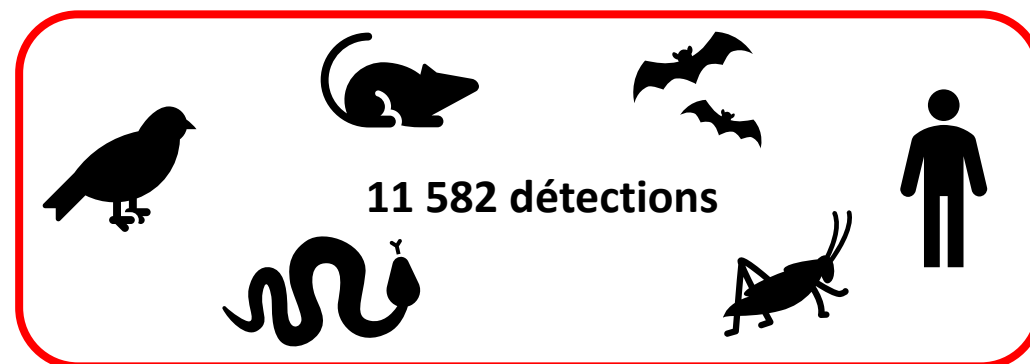
88 231 déclenchements sur 19 mois

Megadetector

67 108 « faux déclenchements »
(76 %)



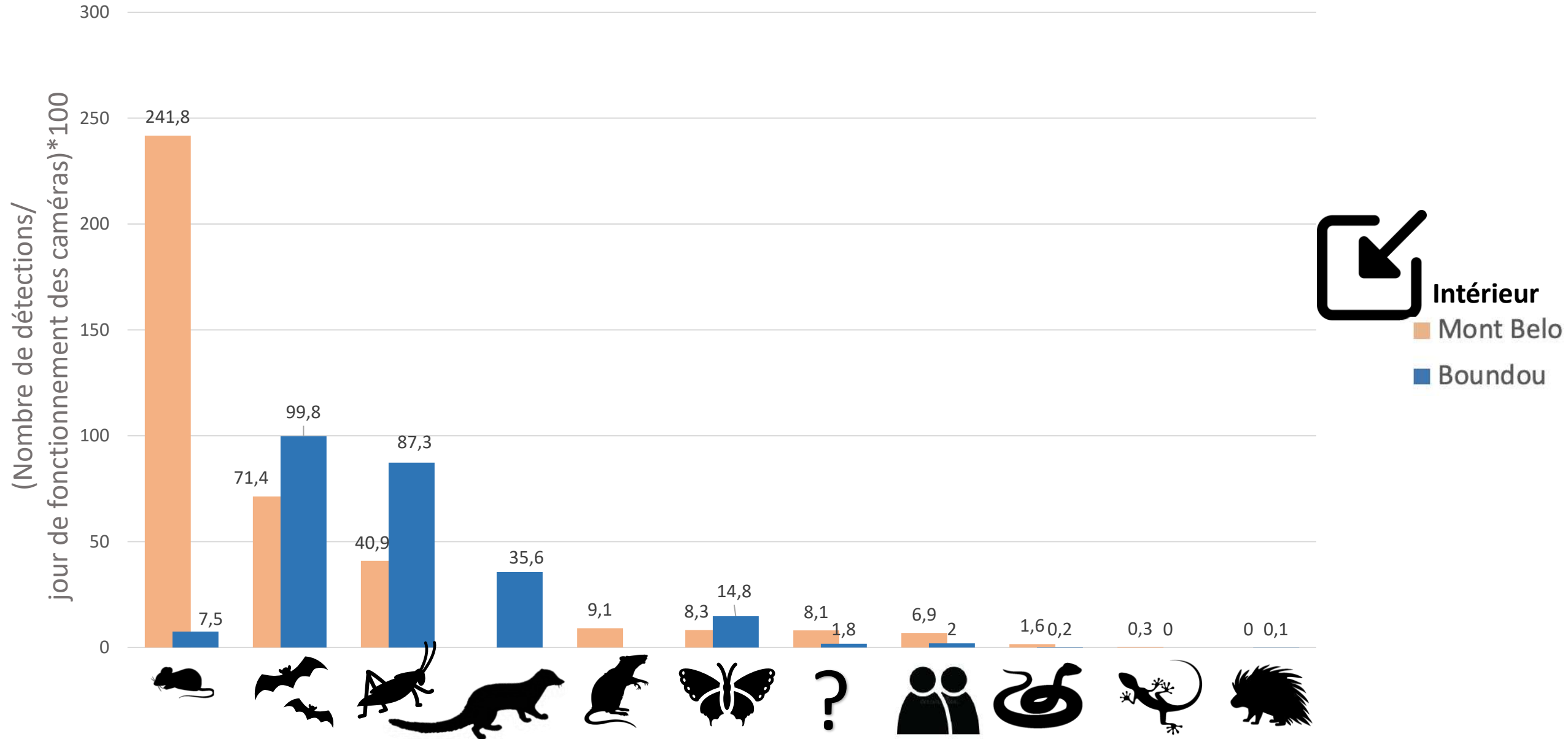
21 123 détections



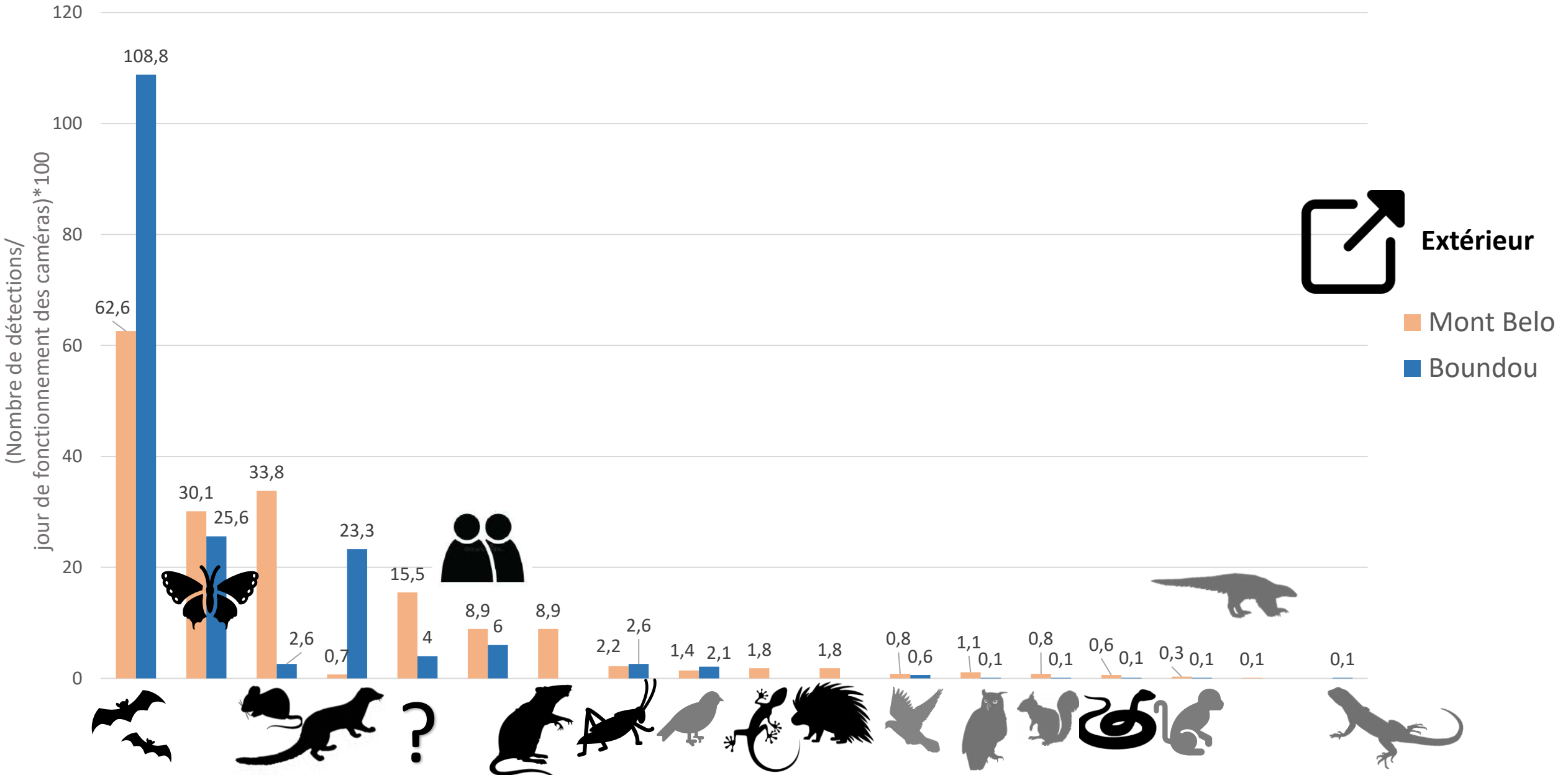
11 582 détections

Doublons
Détections
toutes les 30
min

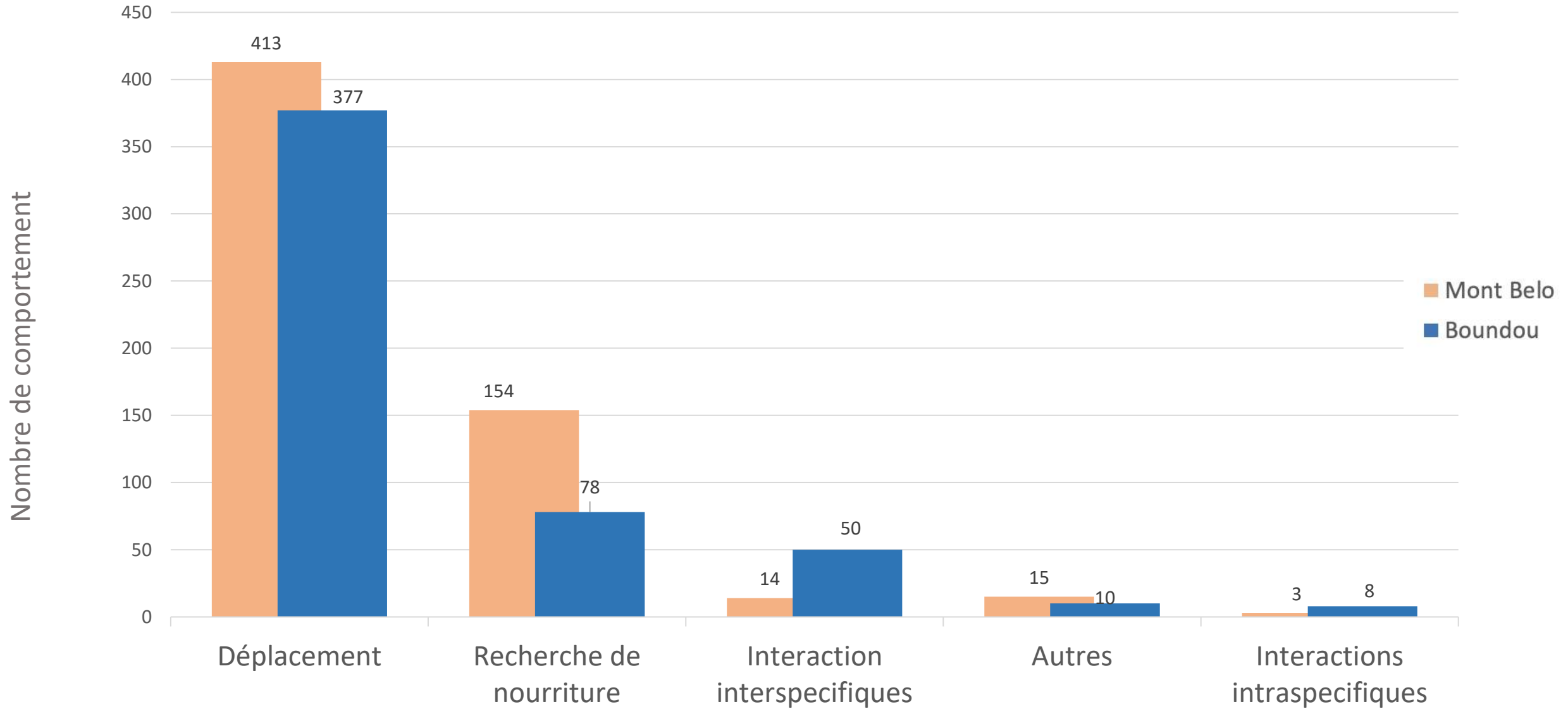
1) Identifier les espèces présentes



1) Identifier les espèces présentes



2) Les différents comportements des vertébrés

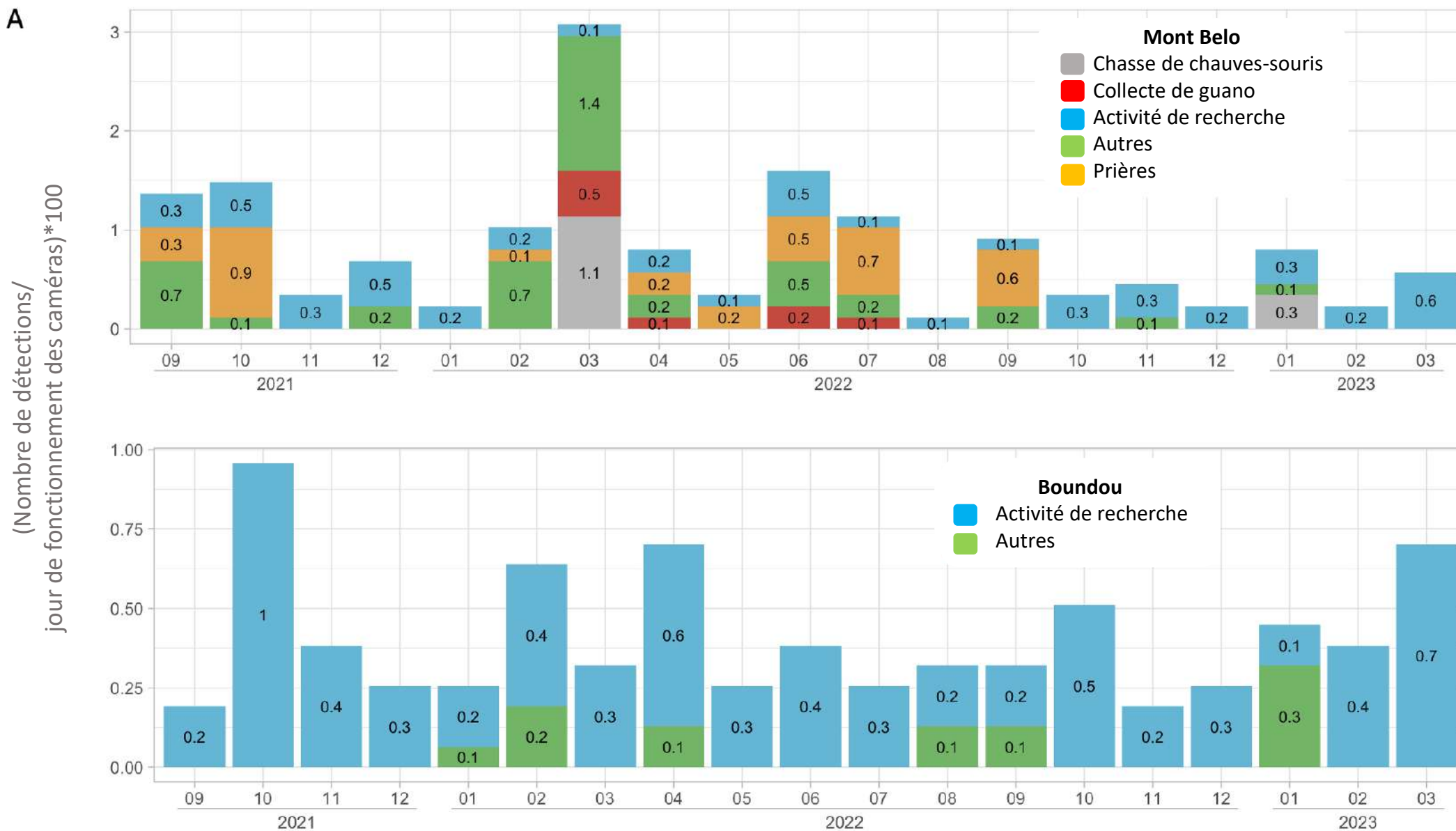


Comportement de prédation - charognards

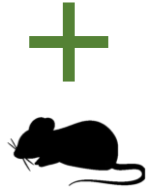
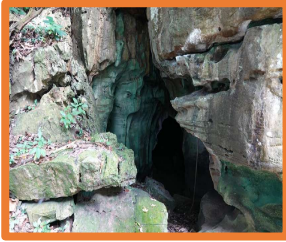


2) L'activité humaine

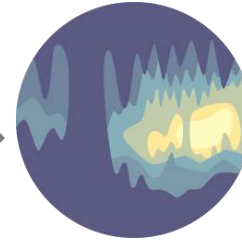
A



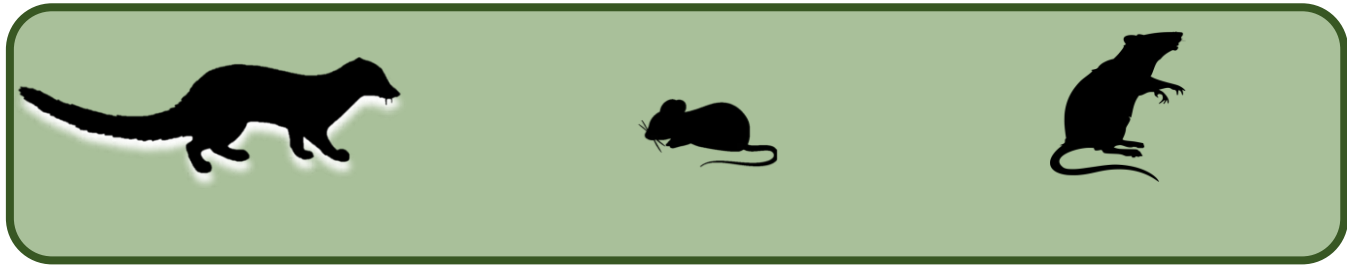
Mont Belo



Boundou

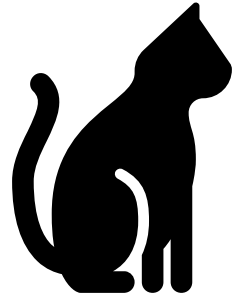


Expositions



Consommation
de viande







ebosURSY



MINISTRE DE L'AGRICULTURE,
DE L'ELEVAGE ET DE LA PECHE

DIRECTION GENERALE
DE L'ELEVAGE

REPUBLIQUE DU CONGO
Unité - Travail - Progrès



Organisation mondiale
de la santé animale
Fondée en tant qu'OIE



Institut de Recherche
pour le Développement
FRANCE





Hipposideros caffer



GCSCO0205



GCSCO0109



GCSCO0093

Triadenops afer



GCSCO0282



GCSCO0344



GCSCO0440

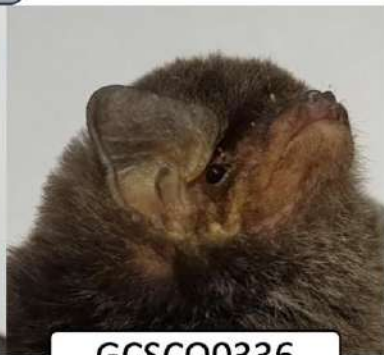
Miniopterus minor



GCSCO0296



GCSCO0301

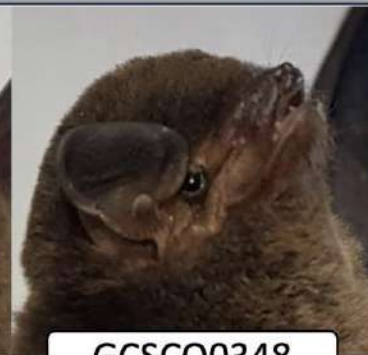


GCSCO0336

Miniopterus inflatus



GCSCO0345



GCSCO0348

Rhinolophus landeri



GCSCO0675



GCSCO0432



GCSCO0425

Rhinolophus fumigatus



GCSCO0307



GCSCO0678



GCSCO0671

Macronycteris gigas



Références

- ¹ CIRAD, UMR ASTRE, Montpellier, France
- ² ASTRE, Univ Montpellier, CIRAD, INRAE, Montpellier, France
- ³ MIVEGEC - Centre National de Recherche Scientifique (CNRS) –Institut de Recherche pour le Développement (IRD) – Montpellier Université, Montpellier, France
- ⁴ Laboratoire National de Santé Publique, Brazzaville, République du Congo
- ⁵ Direction Général de l'Élevage, Ministère de l'Économie forestière, Brazzaville, République du Congo
- ⁶ CIRAD, UMR ASTRE, Harare, Zimbabwe
- ⁷ Serge Morand, 2022.
- ⁸ WHO. « Zoonoses », 2020. <https://www.who.int/news-room/fact-sheets/detail/zoonoses>.
- ⁹ Molinari, J., Gutiérrez, E. E., De Ascensão, A. A., Nassar, J. M., Arends, A., & Márquez, R. J. (2005). Predation by giant centipedes, *Scolopendra gigantea*, on three species of bats in a Venezuelan cave. *Caribbean Journal of Science*, *41*(2), 340–346.
- ¹⁰ Tvrtkovic, N. (2012). Vertebrate Visitors—Birds and Mammals. In W. B. White & D. C. B. T.-E. of C. (Second E. Culver (Eds.), *Encyclopedia of caves* (pp. 845–849). Academic Press. <https://doi.org/https://doi.org/10.1016/B978-0-12-383832-2.00122-5>
- ¹¹ Oedin, M., Brescia, F., Millon, A., Murphy, B. P., Palmas, P., Woinarski, J. C. Z., & Vidal, E. (2021). Cats *Felis catus* as a threat to bats worldwide: a review of the evidence. *Mammal Review*, *51*(3), 323–337. <https://doi.org/10.1111/mam.12240>
- ¹² Lehmann, D., Halbwax, M. L., Makaga, L., Whytock, R., Ndindiwe Malata, L. L., Bombenda Mouele, W., Momboua, B. R., Koumba Pambo, A. F., & White, L. J. T. (2020). Pangolins and bats living together in underground burrows in Lopé National Park, Gabon. *African Journal of Ecology*, *58*(3), 540–542. <https://doi.org/10.1111/aje.12759>
- ¹³ Timen, A. (2009). Response to Imported Case of Marburg Hemorrhagic Fever, the Netherlands. *Emerging Infectious Diseases*, *15*(8), 1171–1175. <https://doi.org/10.3201/eid1508.090051>

¹⁴ Geldenhuys, M., Mortlock, M., Epstein, J. H., Pawęska, J. T., Weyer, J., & Markotter, W. (2021). Overview of Bat and Wildlife Coronavirus Surveillance in Africa: A Framework for Global Investigations. *Viruses*, *13*(5), 936. <https://www.mdpi.com/1999-4915/13/5/936>

¹⁵ Pernet, O., Schneider, B. S., Beaty, S. M., Lebreton, M., Yun, T. E., Park, A., Zachariah, T. T., Bowden, T. A., Hitchens, P., Ramirez, C. M., Daszak, P., Mazet, J., Freiberg, A. N., Wolfe, N. D., & Lee, B. (2014). Evidence for henipavirus spillover into human populations in Africa. *Nature Communications*, *5*. <https://doi.org/10.1038/ncomms6342>

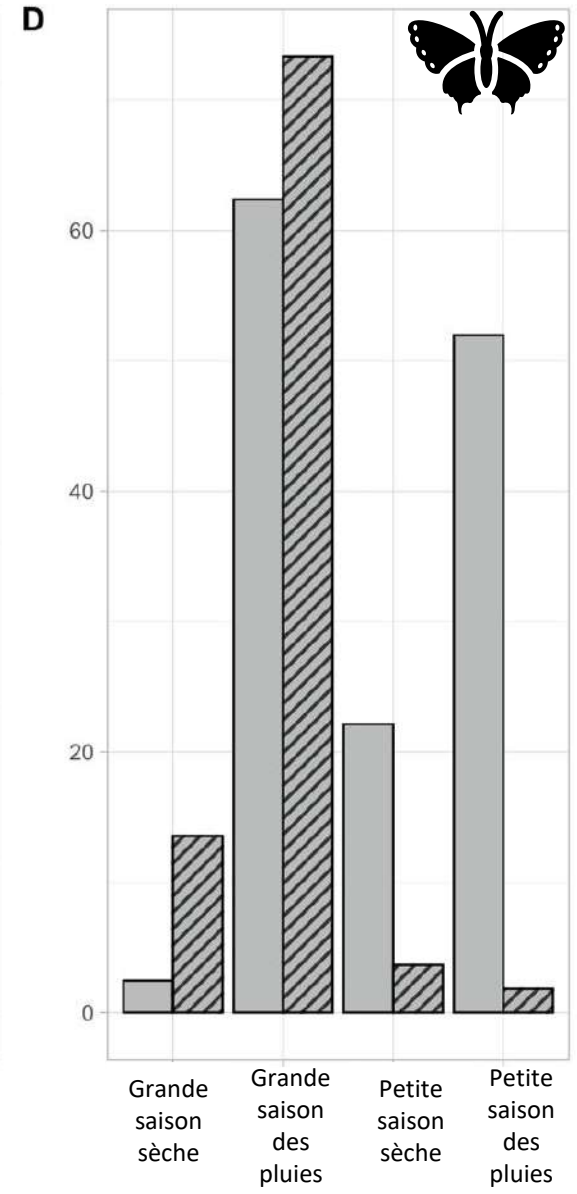
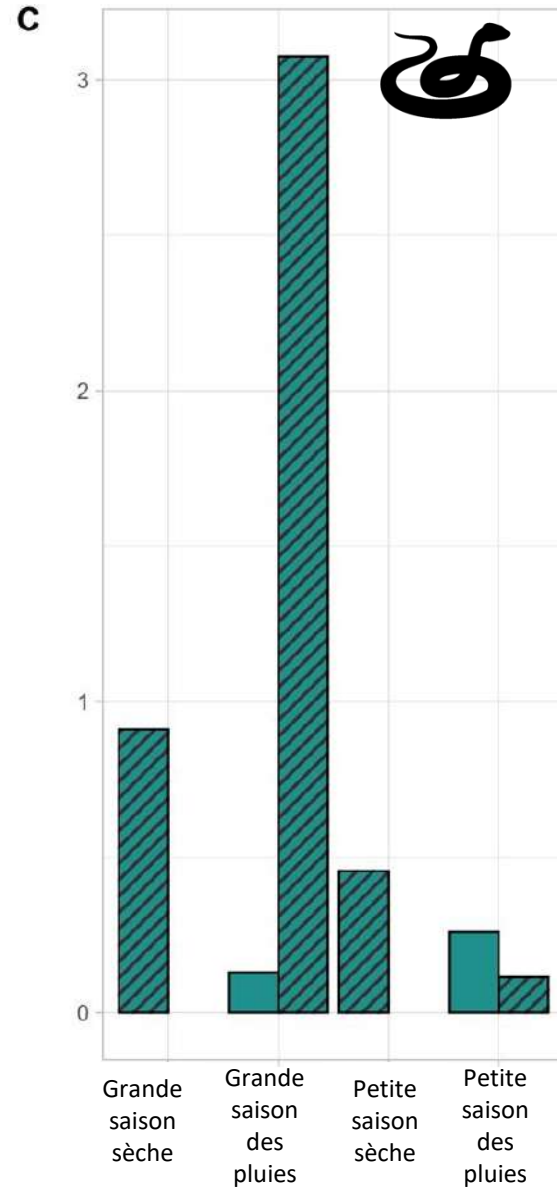
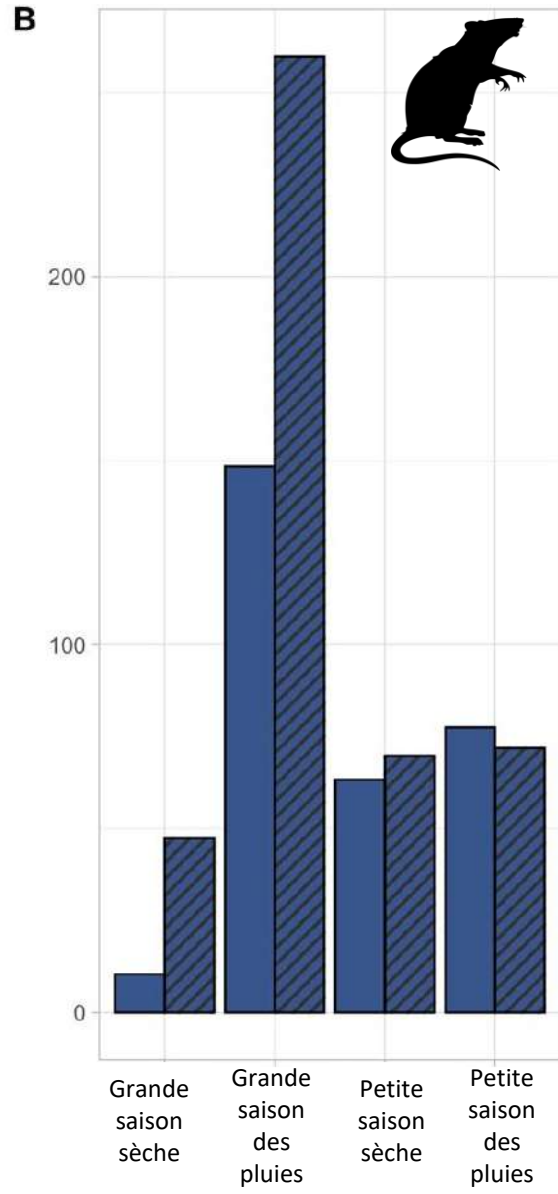
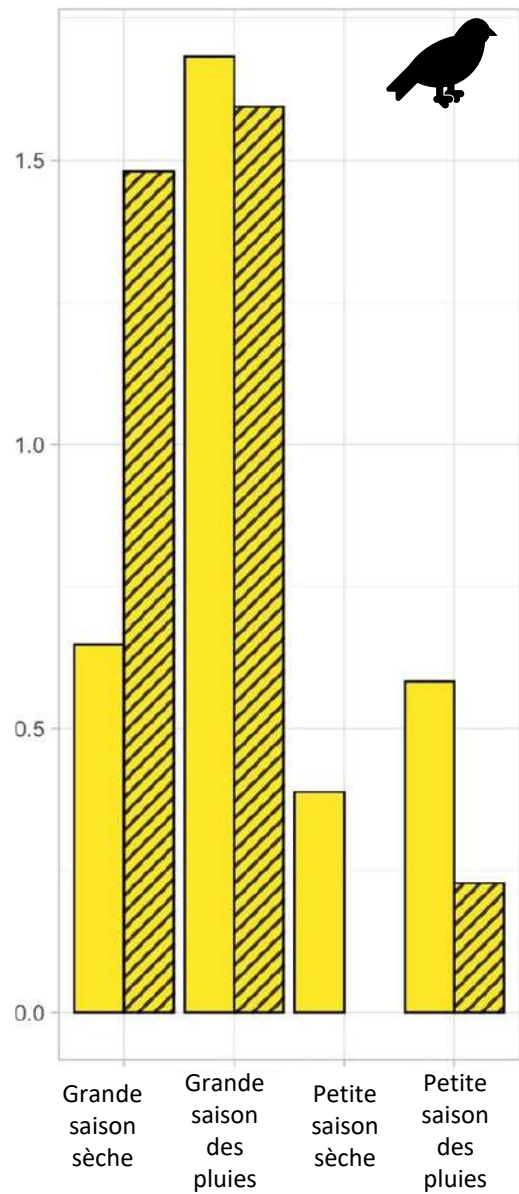
¹⁶ Kaw, B. C., Crameri, G., Hyatt, A., Yu, M., Tompang, M. R., Rosli, J., McEachern, J., Crameri, S., Kumarasamy, V., Eaton, B. T., & Wang, L. F. (2007). A previously unknown reovirus of bat origin is associated with an acute respiratory disease in humans. *Proceedings of the National Academy of Sciences of the United States of America*, *104*(27), 11424–11429.

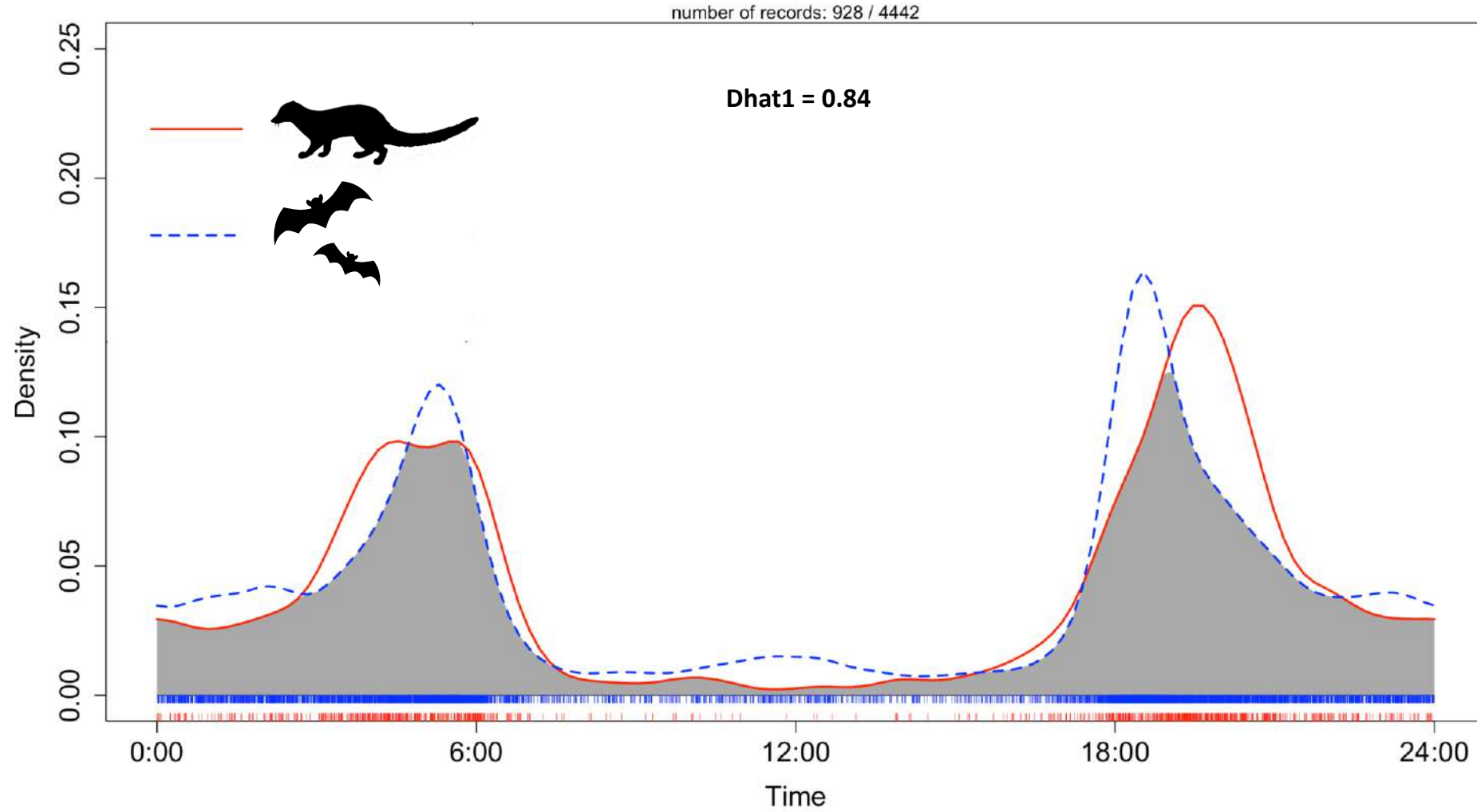
<https://doi.org/10.1073/pnas.0701372104>

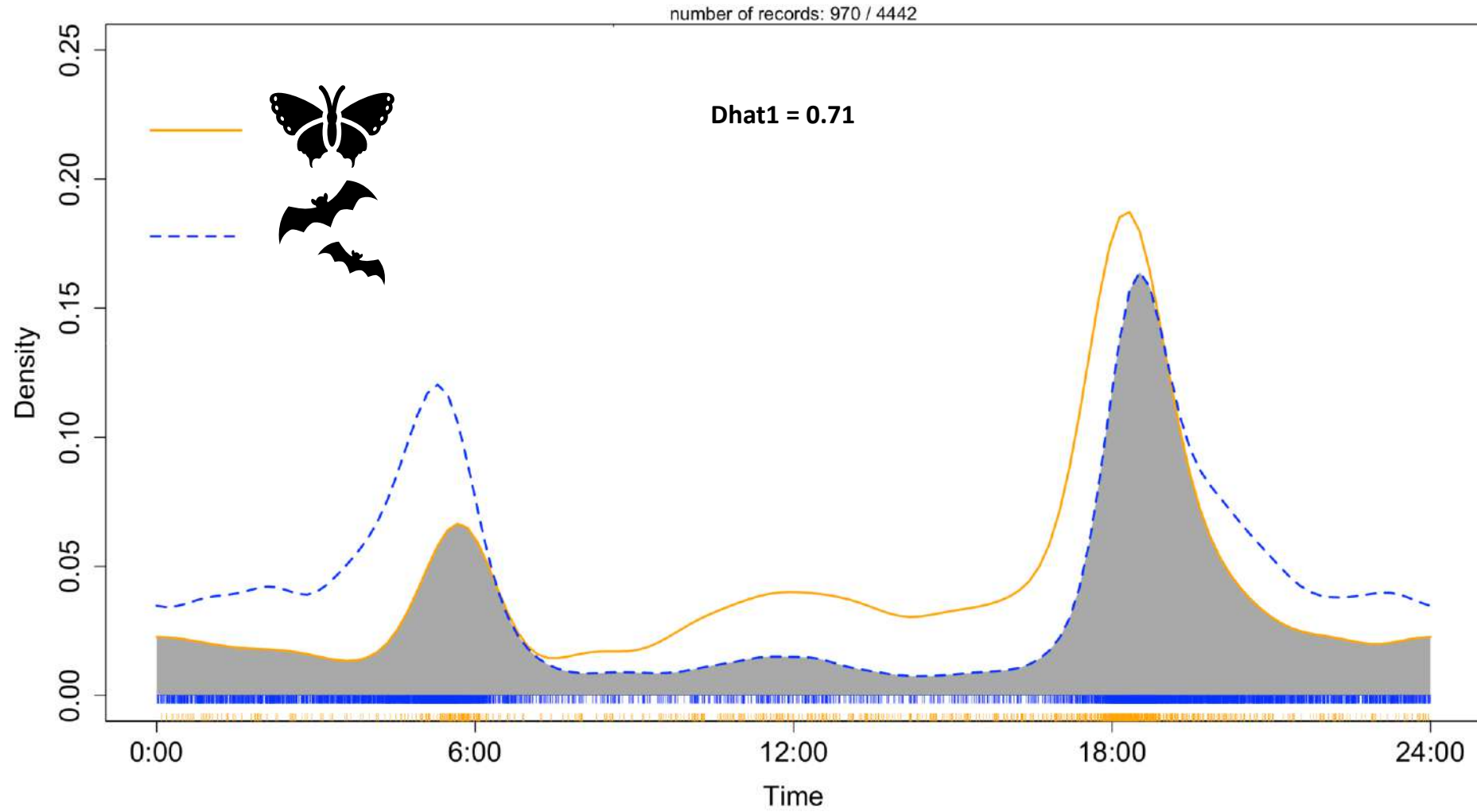
¹⁷ Fritz, M., Reggiardo, B., Filloux, D., Claude, L., Fernandez, E., Mahé, F., ... & Roumagnac, P. (2023). African army ants at the forefront of virome surveillance in a remote tropical forest. *Peer Community Journal*, *3*.

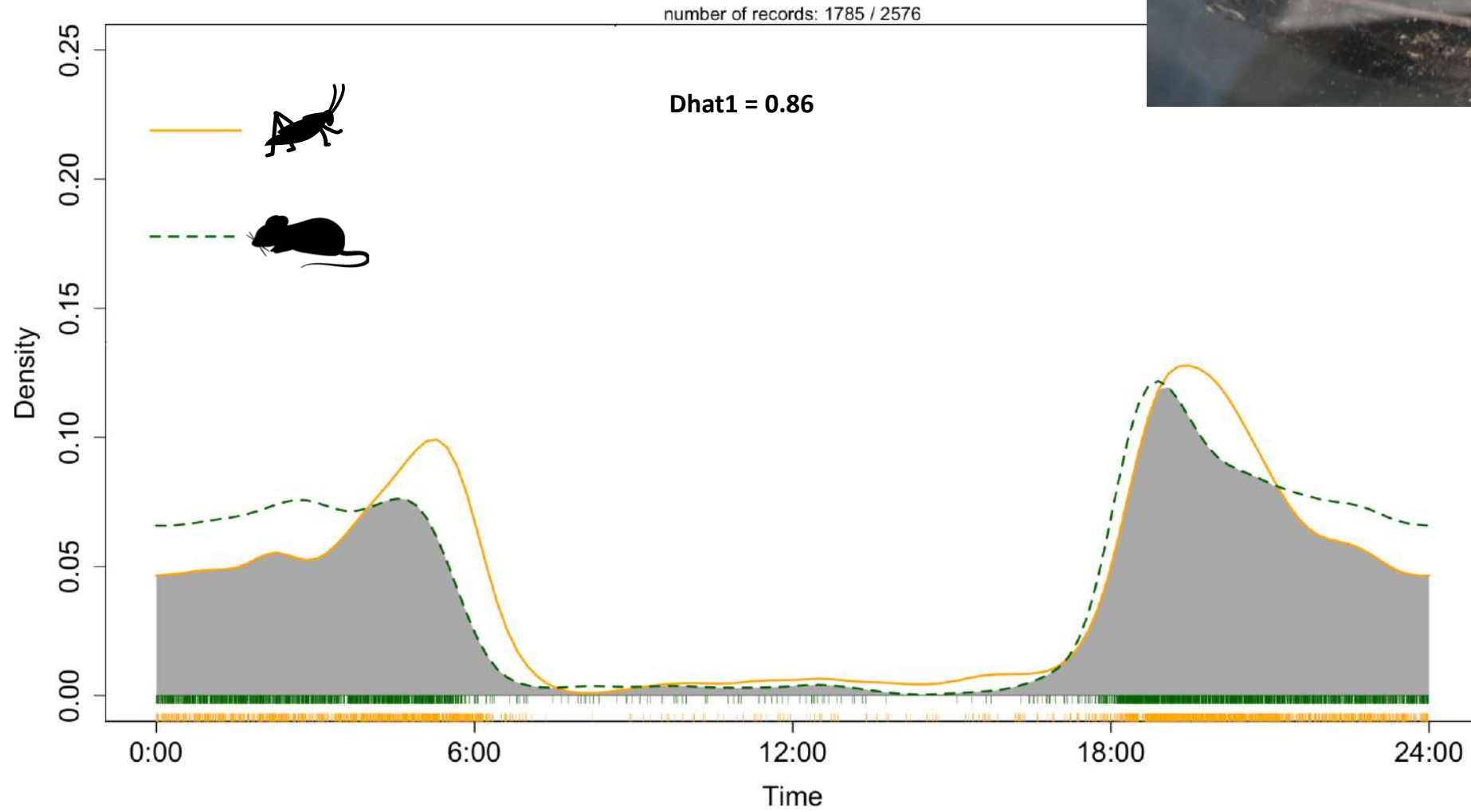
¹⁸ Kurpiers, L. A., Schulte-Herbrüggen, B., Ejotre, I., & Reeder, D. M. (2016). Bushmeat and emerging infectious diseases: lessons from Africa. *Problematic wildlife: a cross-disciplinary approach*, 507-551

¹⁹ Flaticon : <https://www.flaticon.com>, visitée le 18 juin 2023

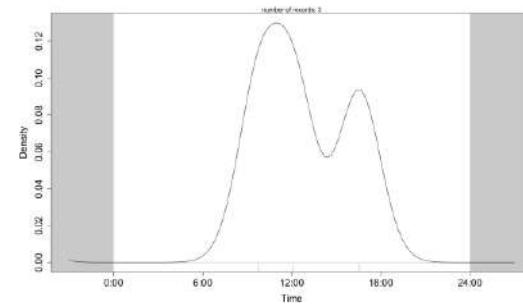




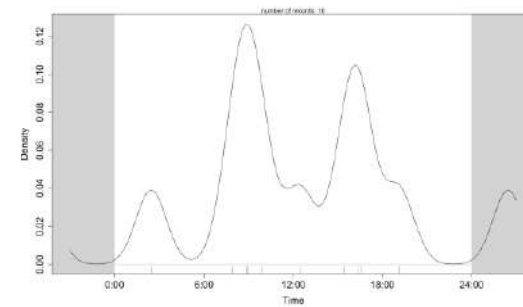




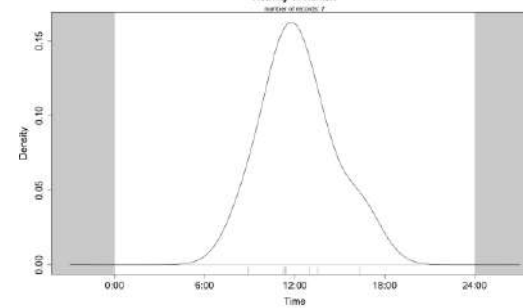
A Hunting activities outside Mont Belo cave



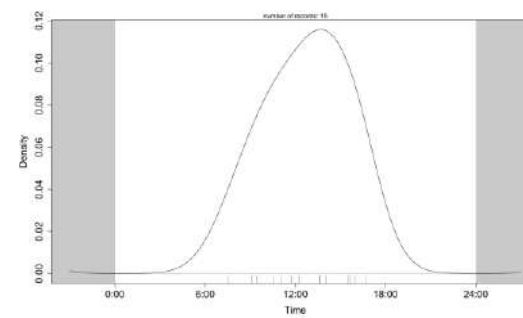
B Hunting activities inside Mont Belo cave



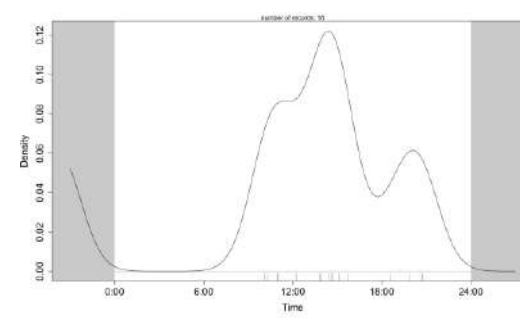
C Guano collection activities outside Mont Belo cave



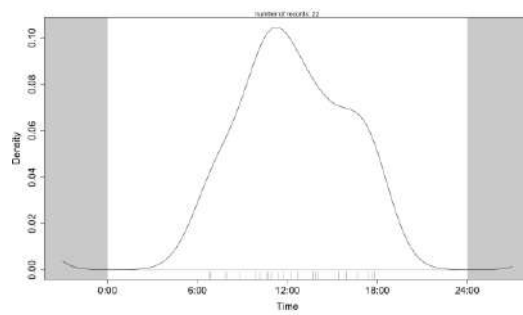
D Prayers activities outside Mont Belo cave



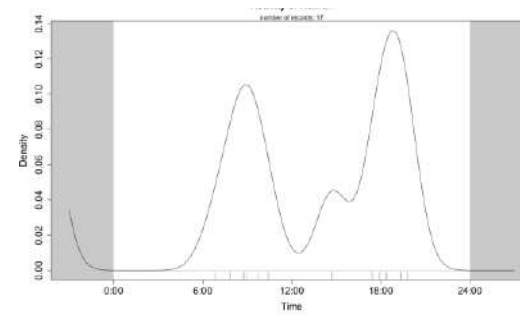
E Prayers activities inside Mont Belo cave

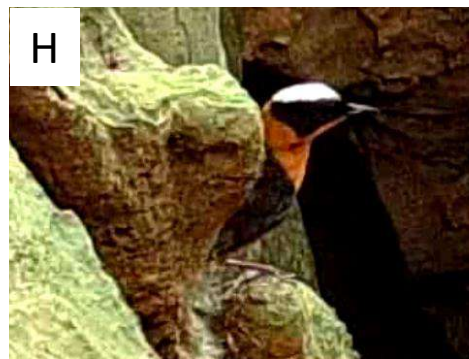
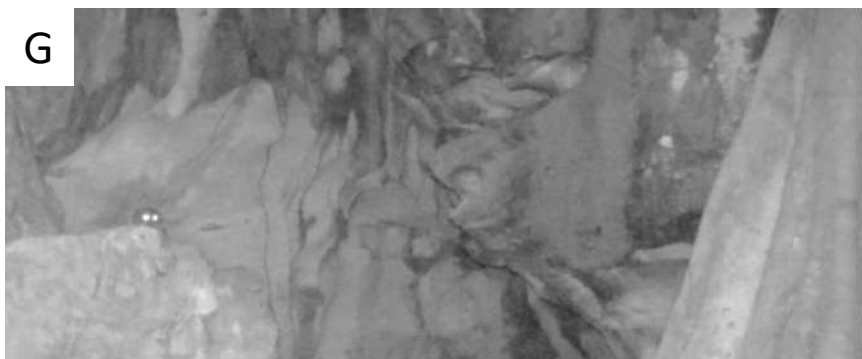


F Others activities outside Mont Belo cave



G Others activities inside Mont Belo cave





Annexes Diapo Supplémentaire

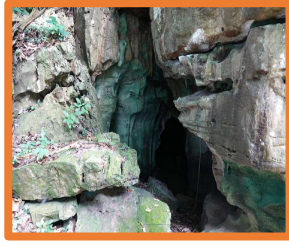


MOULTRIE 25°C MBCAM05 25 SEP 2021 12:08 am

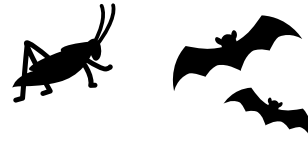
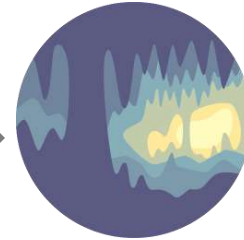
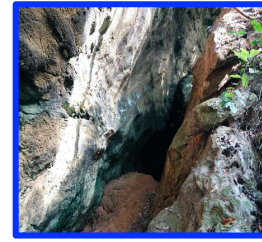


MOULTRIE 26°C BDCAM04 27 OCT 2021 06:56 pm

Mont Belo



Boundou

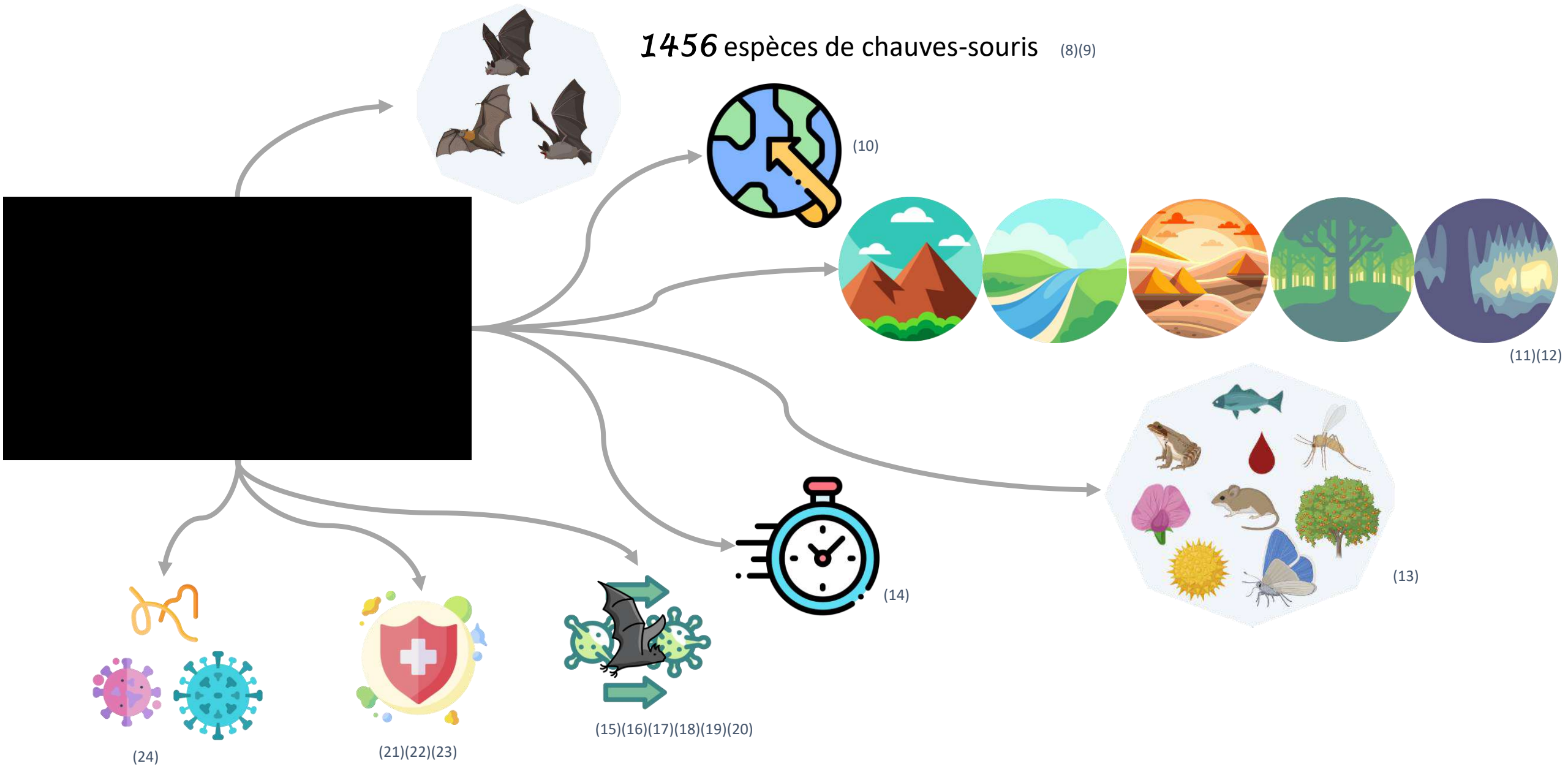


Expositions



Consommation de viande







Hôte secondaires



Epidémies



